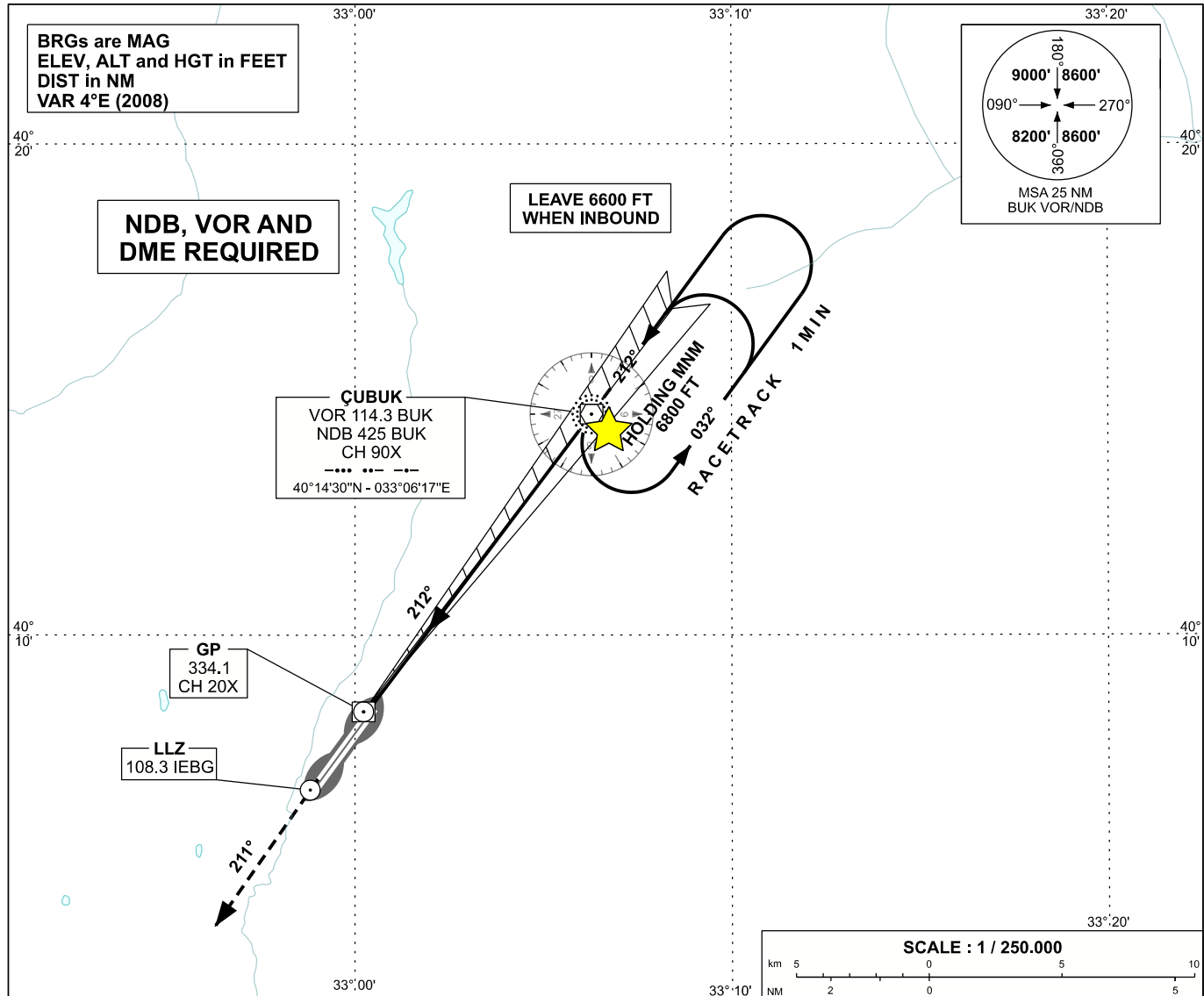


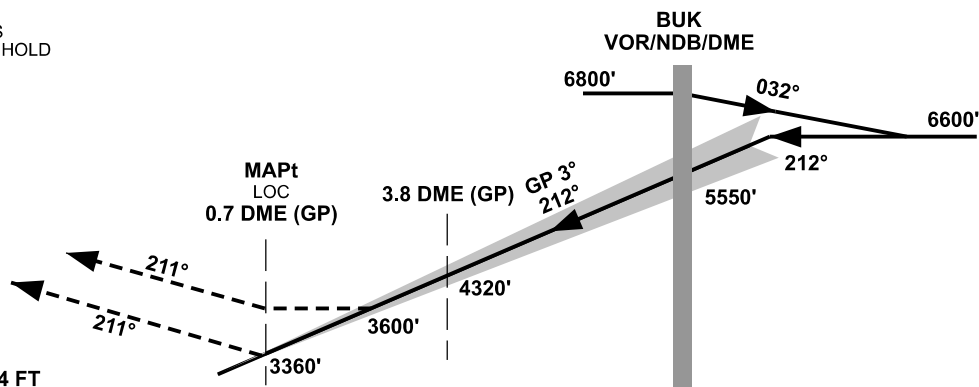
ANKARA/ESENBOĞA
ILS Z CAT I or LOC Z
RWY 21R

APP	119.6 - 119.1	AD ELEV	3127 FT
TWR	118.1 - 257.8	TRANSITION ALTITUDE	10 000 FT
ATIS	123.6		

INSTRUMENT
APPROACH
CHART - ICAO



MISSED APPROACH
CLIMB ON 211° TO CROSS
ANK NDB AT 6500 FT AND HOLD



RWY 21R THR ELEV 3124 FT

NM to/from THR RWY 21R																									
7 6 5 4 3 2 1 0 1 2 3 4 5 6 7 8 9 10 11 12 13 14																									
OCA (H)					A		B		C		D		- INTERCEPT GP AT INBOUND - ILS RDH 50 FT												
Straight-in Approach	CAT I		3324' (200')																						
	LOC		3600' (476')																						
Circling			3800' (673')					4650' (1523')																	

- INTERCEPT GP AT INBOUND
- ILS RDH 50 FT

CHANGE: OCA(H), PROCEDURE NAME